

Vericut-TDM optimizes simulation with integrated tool graphics

The 3D simulation with Vericut simulates the movement of the machine tool and the changes on the workpiece exactly the way they will be used in the working process. In order to achieve accurate results, tool data and graphics of the real tools have to be used. TDM supports NC-program- and simulation systems with tool data and 2D- and 3D Graphics usable for simulation. That makes the planning- and the production processes more efficient and therefore increases your productivity.

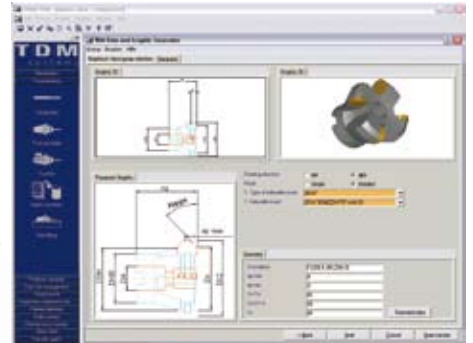
Integration Vericut-TDM:

- Online access to the central TDM tool data base
- No storage of files in the clipboard
- Access to:
 - Tool lists
 - Geometry data
 - Feeds & Speeds
 - True to scale 2D Graphics
 - True to scale 3D Graphics
- Supports milling and drilling tools

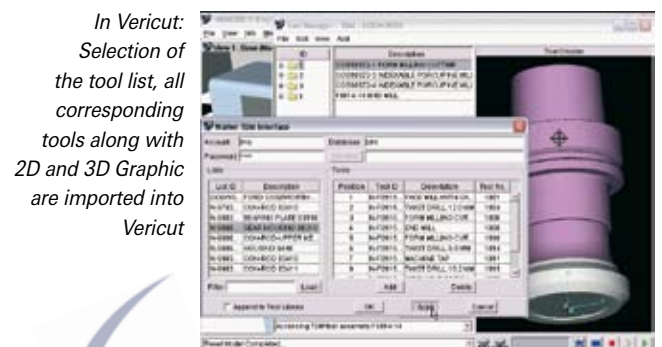
Advantages:

- Simulation with all necessary tool data
- Common data base for nc-programming, simulation, presetting and machining
- Reliable results: Only with 3D Graphics of real tools your simulation is adequate!
- Time savings
- Reduction of machine down times
- Avoidance of machining collisions

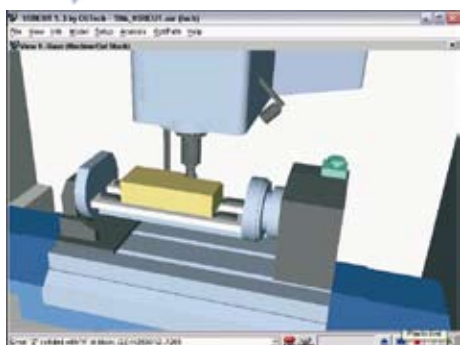
*In TDM:
Generation of tool
data in 2D and
3D and as well
assembling of
a tool*



*Definition of
tool lists for
the specific
NC-program*



*In Vericut:
Selection of
the tool list, all
corresponding
tools along with
2D and 3D Graphic
are imported into
Vericut*



*Realistic
simulation with
tool data and
3D graphics from
TDM!
Result: Maximum
of accuracy!*