



Interview with the Experts

Dramatic Time Savings in Data Entry: Up to 90% faster generation of master data with 2D and 3D graphics!

We talked with Dr. Heinz Fink, Director International Sales, about the functions and benefits of TDM's data and graphics generator.

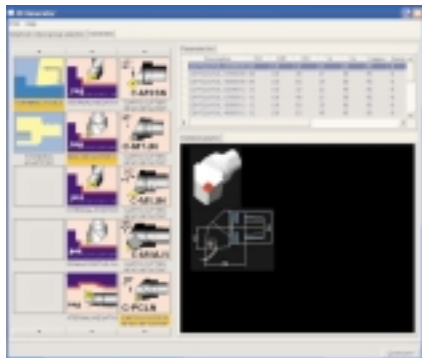


TDMmessage: What can the new data and graphic generator do?

Dr. Fink: On the one hand, the new generator creates 2D drawings and 3D volume models; but while doing so, it also enters tool master data directly into TDM. That makes this data available for all ISO and CAPTO turning and milling tools of SANDVIK Coromant and WALTER manufacturing companies, always with the correct tool holder.

TDMmessage: Why did you develop this generator? After all, drawings and volume models in data form are offered by every tool manufacturer.

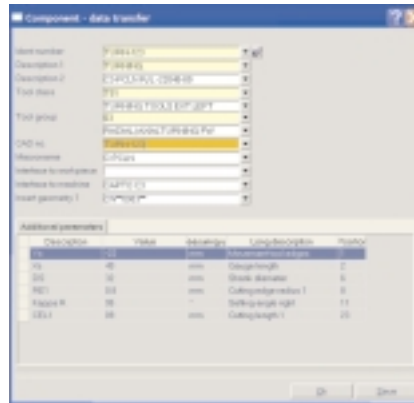
Dr. Fink: That's only part of the picture: the data you mention often lacks the required structure and quality. TDM provides data for simulations to meet special requirements.



TDMmessage: Can you explain that in more detail?

Dr. Fink: 2D graphic images of tool manufacturers are often intended only for

visualization purposes; that is, their quality and structure are not up to the requirements of BMG layer structure. Their 3D volume models clearly show the design and benefits of each tool, but are usually either too complex for purposes of simulation or are dimensionally inaccurate. A key advantage of TDM is its uniform application of rules in automatically generating tool assemblies from the tools of different manufacturers.



TDMmessage: Exactly how does TDM go about generating 2D and 3D -data?

Dr. Fink: TDM works with a uniform data structure based on TDM tool classes, groups and characteristics. The generator for turning tools is based on ISO and CAPTO tool standards, that is, these tools are quasi "manufacturer-neutral". Regarding milling tools, we take data directly from the respective catalogues in order to generate true-to-life data, graphics and models.

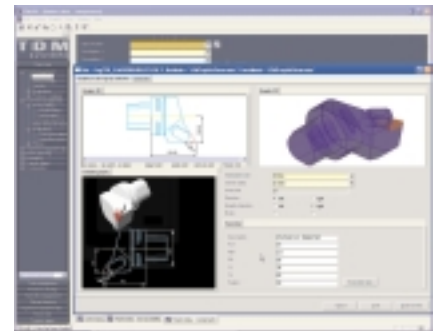
TDMmessage: You've just explained how TDM works with tools from the manufacturers you mentioned at the beginning. But many customers also use tools of other manufacturers, and these tools often differ only in small details. Is there a way to widen the spectrum in the TDM data and graphic generator?

Dr. Fink: In both cases, we can automatically generate "semi-standard" tools by specifying and adjusting additional parameters. What's important here is that these modified tools are always based on existing tools and are not "rubber dummies".

TDMmessage: Users can generate drawings

and volume models for their tools with their own CAD systems. Why should there be a generator in TDM?

Dr. Fink: That brings us to a major advantage of TDM: time savings. CAD designers usually require 60 to 90 minutes to create a single 2D drawing and 3D model. Our generator does it in about 5 minutes, and that includes the time needed to set up tool information in TDM. Now, if you take a company with ca. 4,000 tool components, that means you can reduce the time needed to create graphic images and for data input from about 3000 hours to about 300 hours. That's an enormous benefit in terms of time and costs.



TDMmessage: That's something our users will certainly like to hear. Will these benefits be available in future for other tools as well, like drills or broach tools as well as for tools from other manufacturers?

Dr. Fink: It goes without saying that we're not resting on our laurels. Data for drills will be available at the beginning of 2005. Regarding tools from other manufacturers, we can only ask all manufacturers to work together with us, to send us the data we need, and to allow us to integrate their data into TDM. That will benefit both sides, the manufacturers and the users.

TDMmessage: Dr. Fink, many thanks.