

On the way to digitalization:

Specialist in coupling systems decides on TDM Global Line

Lüdecke GmbH, specialist for quick-lock coupling systems in Amberg, made the decision to rely on TDM Systems' tool management software Global Line at the end of 2019. Since the previous solution for the management of tools and data was not able to meet the requirements of the leading system manufacturer, they were on the hunt for a promising alternative. Those responsible found it with TDM Systems.

Impressive user-friendliness and scope of applications

According to Peter Eckl, Tool Management Expert at Lüdecke GmbH, „the crucial factor in making this decision was accommodating a huge variety of tasks in the tool management sector“. It quickly became clear that the new generation of the TDM Global Line tool management software was the right software for Peter Eckl's team. It was not only the modern,

intuitive user interface and user-friendliness that immediately excited the users, but also the flexibly definable scope of applications. „Global Line offers a great user interface – from the management of individual items and tool assemblies to NC program management and the provision of knowledge and production-relevant data for production, which can be configured for individual employees and consequently offers a great workflow,“ recounts Eckl with enthusiasm.



LÜDECKE

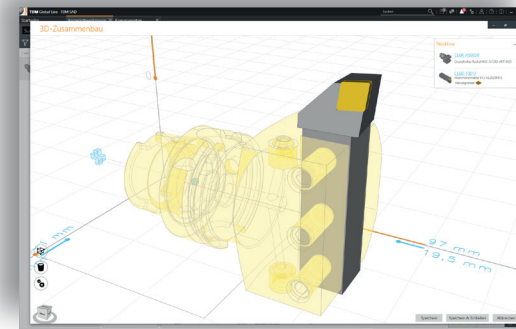
Since 1930. The perfect connection.



“

The new main release brings along many new features and some useful improvements. I especially liked the integration of the 3D Solid Editor and the possibility of NC program management within Global Line. For our team it was a very good opportunity to participate in the development of the product through the RampUp phase. I especially liked the personal contact and the support on individual topics by TDM Systems.

Peter Eckl,
Tool Management, Lüdecke GmbH in Amberg, Germany, specialist for coupling systems

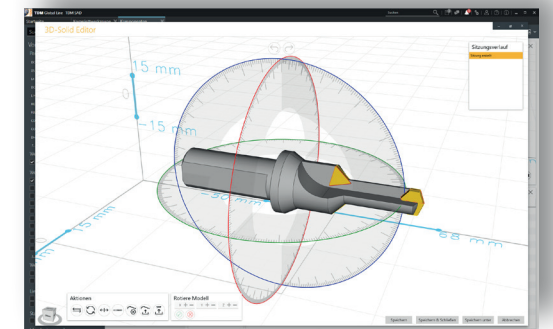


Data management with 3D expertise

So far, around 4000 items and several tool assemblies have been created. Manual data creation was mainly supported by the TDM WebCatalog which offers the tools of several manufacturers as an online catalog to be downloaded. The created items are then linked with production-relevant data and created as master data. The Lüdecke team sees a significant gain in the 3D-Solid-Editor for preparing 3D tool graphics, which has been part of the Global Line scope of applications since its main release in 2020. Quick and easy processing of 3D data is particularly helpful and accelerates the creation of tool items.

Comprehensive improvements in sight with Global Line

Right from the start, Lüdecke GmbH had clear ideas of the processes and areas of application that Global Line would support and improve. „Global Line will support us in the future with tool and program management, in daily shopfloor supply and in the ordering process. The interface to the presetting device also makes the measurement of individual tool assemblies and tool lists easier, consequently shortening the setup process,“ explains Peter Eckl. Previously, crib management, tool assembly and presetting were manually coordinated at the beginning of the order by setup staff and machine users. However, this required too much time, and data and production-relevant information were also often missing.

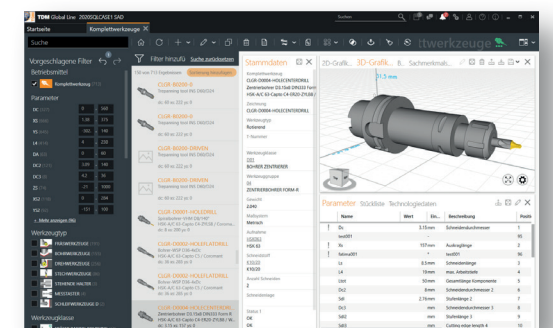
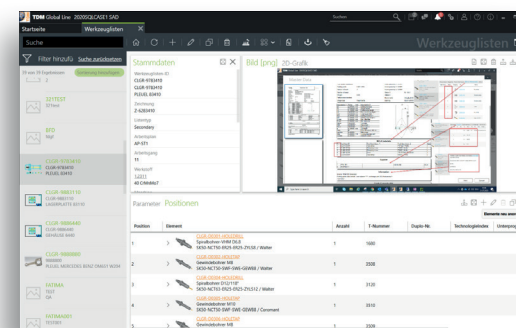


More automation in tool preparation

The objective is now to establish an automated process of tool preparation from stock removal to the setup process. Peter Eckl explains the procedure as follows: „The tool lists are the central medium with which we automate the process. Tools are taken from the warehouse, pre-assembled and measured. The presetting device is connected to TDM Global Line and there is an exchange of the planned nominal data and the actual measured data. Our objective is to have all tool assemblies available before the start of the production order. We have now shifted the presetting process before the setup process. This makes the entire process easier, and we significantly reduce the potential for errors.“

Highlights of current release leave customers thrilled

We were able to win Peter Eckl's team as a ramp-up customer for the 2020 main release. Ramp-up customers receive a new release in advance and test it thoroughly under real conditions. Further developments and improvements are particularly scrutinized here. After a successful ramp-up phase, users from Lüdecke were also in agreement about which innovations impressed them the most. These were the visually revised classification, the advanced search for items and tool assemblies that enables a quick search within the entire Global Line application, and the new NC program management and 3D-Solid Editor.



Virtual Academy simplifies software introduction

With the Virtual Academy, TDM Systems offers comprehensive options for e-learning and further training in tool management. Videos, FAQs and webinars provide exactly the right level of support for each user and offer precise step-by-step instructions and content. „Via the dashboard, you can retain an overview of your own status when it comes to individual topics and get useful recommendations for further courses and webinars. Highly recommended and a great help, especially for beginners,“ was Peter Eckl's final conclusion.

TDM Global Line software modules at Lüdecke:

- TDM Base Module
- TDM 3D-Solid Editor
- TDM Tool Crib Module plus crib system interface
- TDM Purchase Requisition Module
- TDM Shopfloor Manager
- TDM Integrated NC-Program Manager
- Interfaces: Hänel crib system, Zoller presetting system

Lüdecke's highlights of TDM Global Line:

- Individual configurability of the application
- Great user-friendliness thanks to modern software interface
- Generates a very good workflow
- Advanced tool search according to various criteria in the complete TDM Global Line system
- TDM 3D-Solid Editor for processing 3D tool data
- TDM NC-Program Manager for NC program management
- TDM Virtual Academy

For more than 89 years, LÜDECKE has been the competent partner for coupling systems to connect flexible media-conveying lines with tools, machinery and equipment.

Since 1949, we have been producing couplers and fittings for a wide variety of applications and media at the Amberg location, which are sold worldwide via specialist, technical dealers or used as original equipment by leading machine builders (OEM). We develop and produce high-quality, innovative and sustainable products according to highest quality standards. The choice of products includes a comprehensive standard range as well as individually designed custom-made items. With our broad product portfolio, many years of know-how and our versatile service package, we always guarantee safe and efficient solutions for your daily work.

